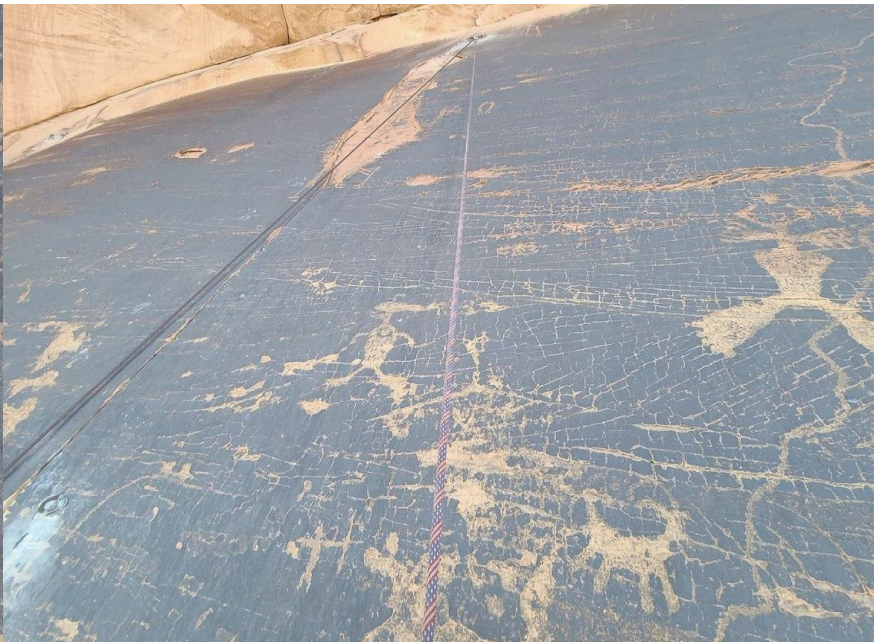
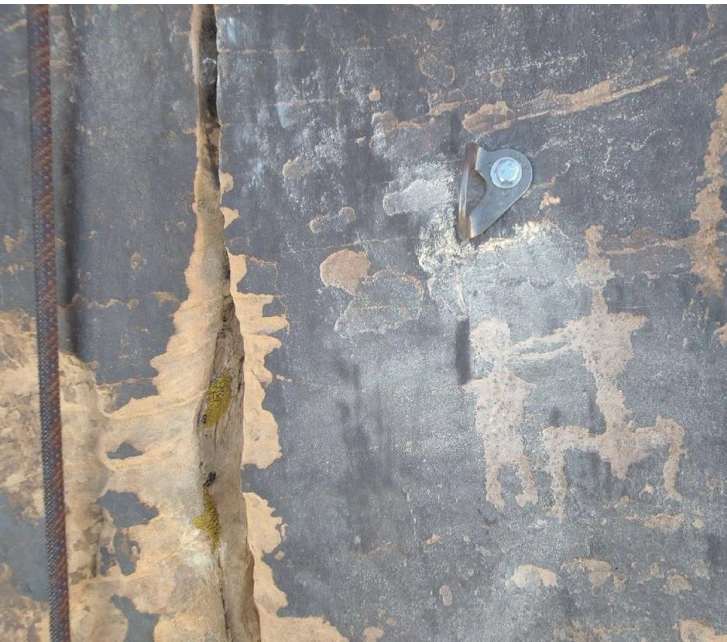


Best Practices for Climbing Respectfully on Indigenous Lands

Ashleigh Thompson (Red Lake Ojibwe), MA, PhD
Candidate (on a leave-of-absence), Director of Tribal
Collaboration at Archaeology Southwest



Sunshine Panel

Victimless crime?

Ute, Dine, Paiute, Hopi, and Zuni peoples

Tohono O'odham and Pascua Yaqui Lands



Indigenous Peoples of the US

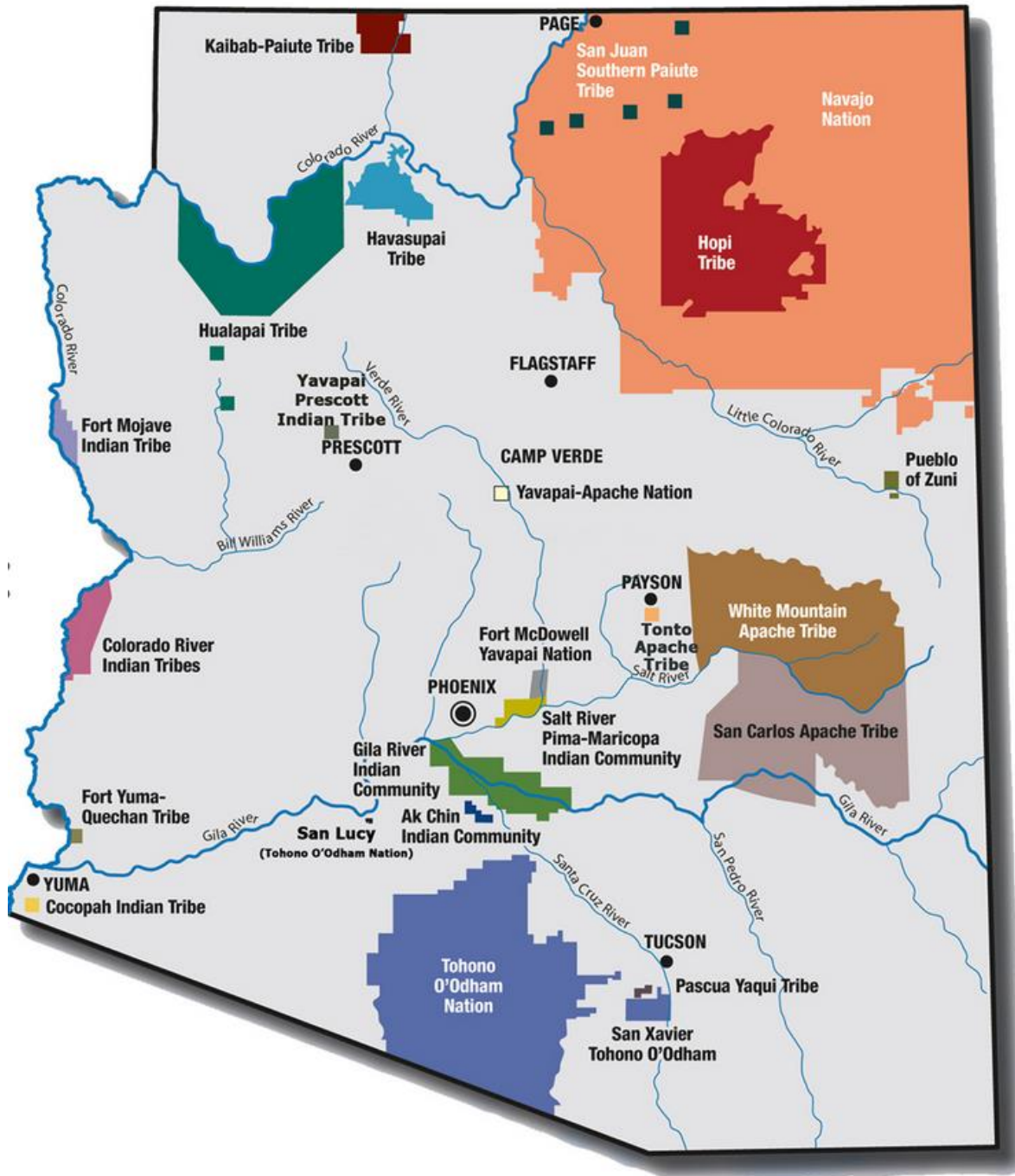
5.6 million (2020 US census)

574 federally recognized Tribes with diversity

22 Nation Nations in Arizona

30% of Arizona = Tribal lands

All lands are the homelands to Indigenous peoples





A set of human footprints uncovered by researchers in White Sands National Park. According to a new study, these tracks date to between 21,000 to 23... [Read More](#)

PHOTOGRAPH BY DAN ODESS

HISTORY & CULTURE | NEWS

Stunning footprints push back human arrival in Americas by thousands of years

The tracks at New Mexico's White Sands National Park are upending past assumptions on when humans first ventured into North and South America.

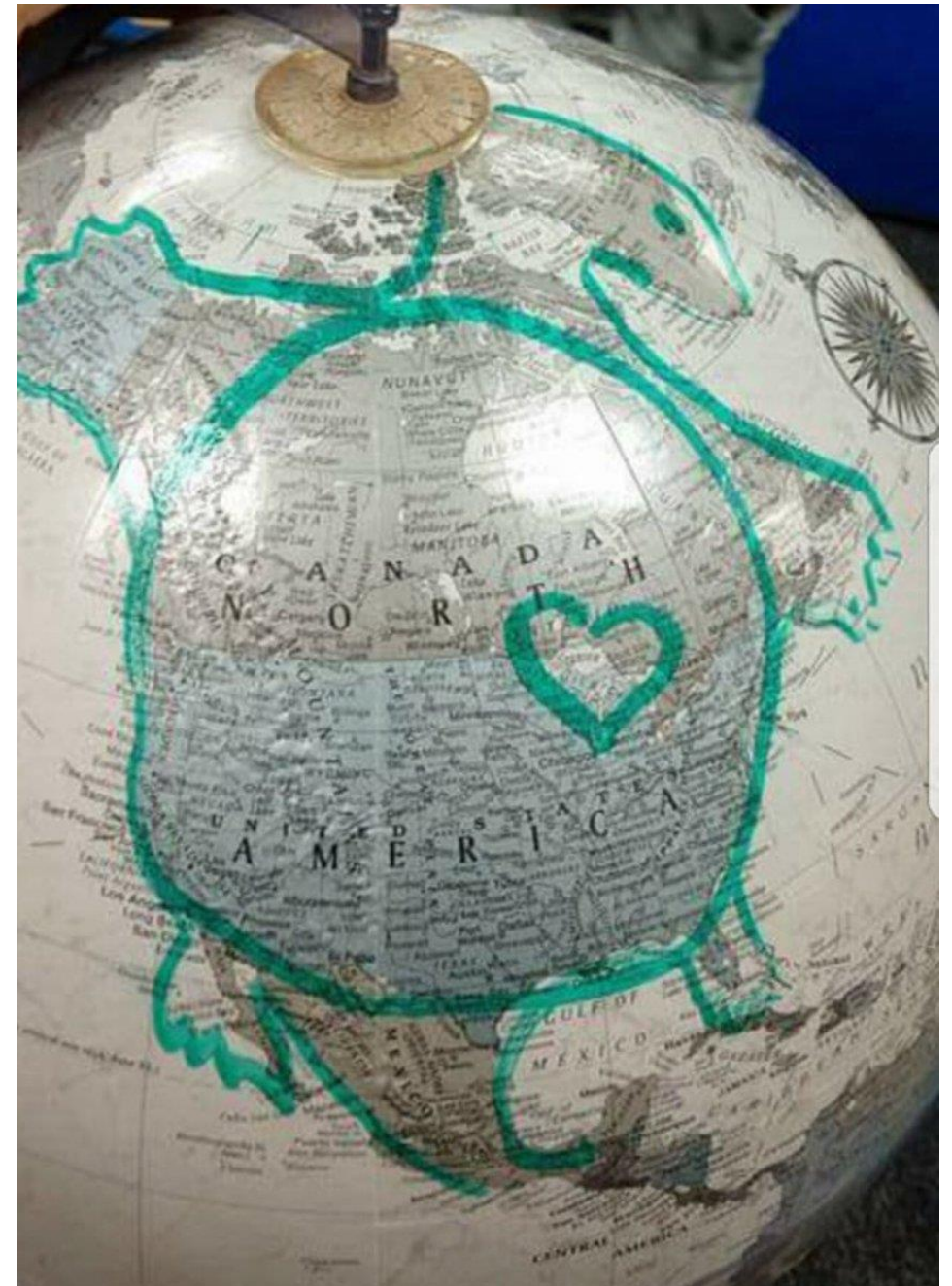
“But for the removal and exclusion of Tribes from large swaths of their traditional territories, there would be no public lands.”

—Monte Mills and Martin Nie

Yosemite National Park, Ahwahnechee

Oak Flat and Cochise, Nde (Apache)

Glacier National Park, Pikuni (Blackfeet)



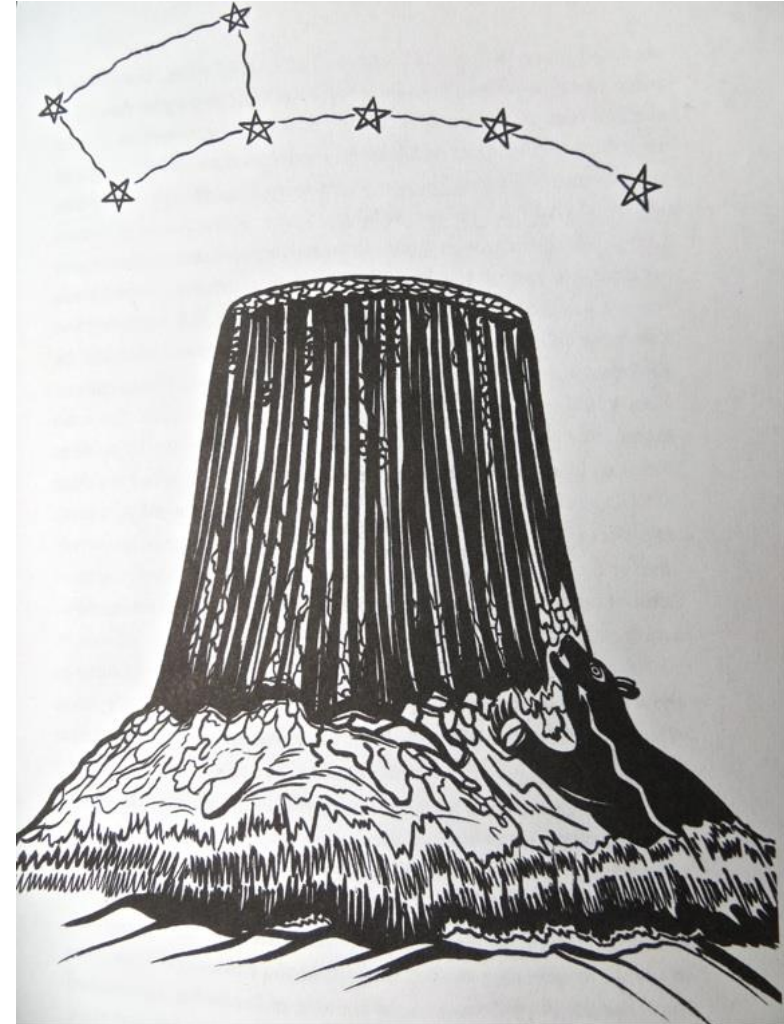
Place-Based Peoples

Origin Stories

Oral Histories

Place-based
ceremonies

Land-based
praxis



Al Momaday's (Kiowa) illustration
of Bear Lodge Butte.

Relationship, Responsibility, Reciprocity, and Redistribution

The four Rs of respectful recreation

Relationship

“Relationship is the kinship obligation, the profound sense that we human beings are related, not only to each other, but to all things, animals, plants, rocks—in fact, to the very stuff the stars are made of. This relationship is a kinship relationship.”

—LaDonna Harris and Jacqueline Wasilewski



Responsibility

“Forget your rights
and remember your
responsibilities!”

—Anishinaabe Elder

STATEMENT: Access Fund Responds to Proposed Closure of Climbing at Massacre Rocks

10/26/2022

STATEMENT: Access Fund Responds to Proposed Closure of Climbing at Massacre Rocks

On October 26, the Bureau of Land Management (BLM) released its final Environmental Impact Statement regarding Massacre Rocks, Idaho. The decision will close climbing in the 3,846-acre American Falls Archaeological District, which is listed on the National Register of Historic Places, to protect cultural and historic resources important to the Shoshone-Bannock people. Climbers can still access extensive climbing opportunities on adjacent federal and state lands.

“As climbers, we honor and respect Indigenous people who have cared for the land since time immemorial and continue to do so today,” **says Access Fund Executive Director Chris Winter.** “This is a special and unique place, and we urge the climbing community to respect the decision proposed by the Bureau of Land Management.”

Reciprocity

“I always stress respect. Everything is a sacred, living entity. Everything has a spirit. If for whatever reason you have to take something, then you are to give an offering. Take only what you need. Every place you go should be better when you leave.”

–Ramon Riley, White Mountain Apache



Redistribution

“Wealth among traditional people is measured by having enough to give away.”

–Robin Wall Kimmerer, Potawatomi

The screenshot shows the Instagram profile for 'thegearfundcollective'. The profile picture is a circular logo with the text 'the gear fund collective' over a rainbow background. The bio states: 'redistributing outdoor gear ✨ free of charge ✨ in a mutual aid framework. Black/Indigenous/People of Color/LGBTQ+/Adaptive folks prioritized. SLC UT. linktr.ee/gearfundcollective'. The profile has 219 posts, 3,546 followers, and 323 following. Below the bio are four circular icons: 'Before & After' (showing a pile of gear), 'Items We Acc...' (with text 'we accept the following gear:'), 'Info' (with text 'WE DO ASK PEOPLE TO LET US KNOW WHAT COMMUNITIES THEY IDENTIFY WITH. HOWEVER YOU DO NOT HAVE TO DISCLOSE YOUR IMMIGRATION STATUS TO US EVER'), and 'The Goods' (showing a person with gear). The main content area shows a grid of posts. The first post is a brown paper bag with a logo and a star icon. The second post is a text-based image with a star icon: 'NO GEAR TO DONATE BUT WANT TO HELP OUT? SEND US \$\$\$ ALL FUNDS GO TO SHIPPING ITEMS SO THIS INITIATIVE CAN BE ENTIRELY COST FREE TO THE COMMUNITIES WE SERVE ❤️ VENMO: @GEARFUNDCOLLECTIVE'. The third post is a text-based image with a star icon: 'WE DO ASK PEOPLE TO LET US KNOW WHAT COMMUNITIES THEY IDENTIFY WITH. HOWEVER YOU DO NOT HAVE TO DISCLOSE YOUR IMMIGRATION STATUS TO US EVER'. Below the grid are three more images: a pile of brown paper bags, a collection of outdoor gear including backpacks and shoes, and a collection of colorful outdoor gear including backpacks and jackets.

SaveHistory.org



SaveHistory.org is an outreach campaign that supports the movement to end archaeological resource crime on Tribal lands and *Protect* American Indian history.

OUR GOALS

Detect archaeological resource crimes through site monitoring and community reporting

Respond to reported crimes and investigate swiftly and effectively and *Restore* damaged sites

Prevent archaeological resource crime by centering Tribal perspectives on the value of ancestral sites

Working alongside our partners, we bring looters and vandals to *Justice* and return artifacts and belongings to their rightful owners.

We raise *AWARENESS* of the educational, spiritual, and scientific importance of archaeological sites and cultural landscapes, especially in Arizona, southern California, Nevada, New Mexico, and Utah.



It depends.

Can I climb on tribal land?

Ideas for being a good relative/climber

Research restrictions or closures

Investigate local Tribal protocols

Know whose lands you're on

Think twice before using Indigenous-themed names, jokes, and comments

- No cultural appropriation

Stewardship (leave no trace)

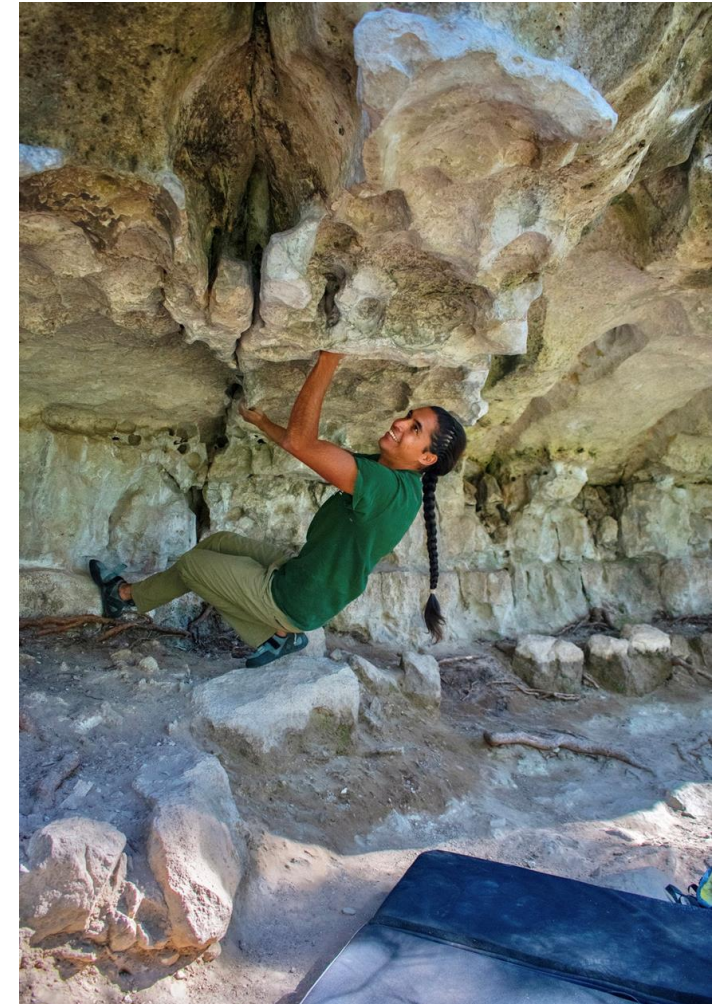
Appoint and recommend Indigenous employees, speakers, etc.

Support Indigenous activism

Hire Native guides & buy Native

Invite Indigenous people to your events, gatherings, and more.

- Pay them for any labor.



LEARN MORE

Indigenous Womxn Climb

Indigenous Women Hike

Indigenous Field Guide

Native Women's Wilderness

Native Women Running

Seeding Sovereignty

Native Power Rangers

Save History

REDISTRIBUTION

Indian Land Tenure Foundation

The Gear Fund Collective

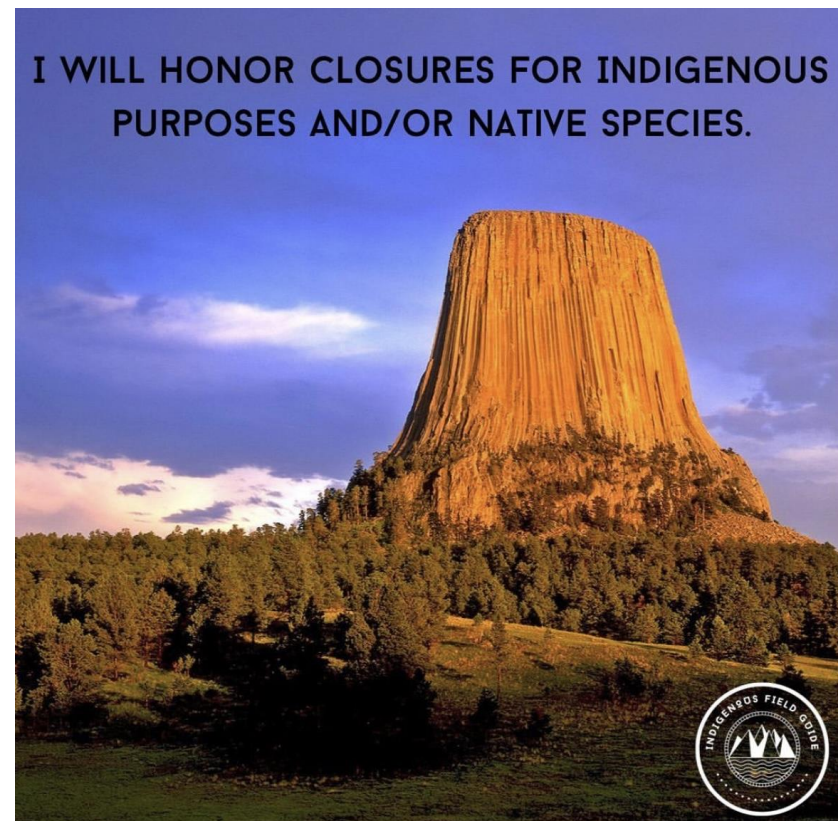
Utah Diné Bikéyah

Save Oak Flat

Rising Hearts (race org)

Brown Girls Climb

**I WILL HONOR CLOSURES FOR INDIGENOUS
PURPOSES AND/OR NATIVE SPECIES.**





Questions or comments?